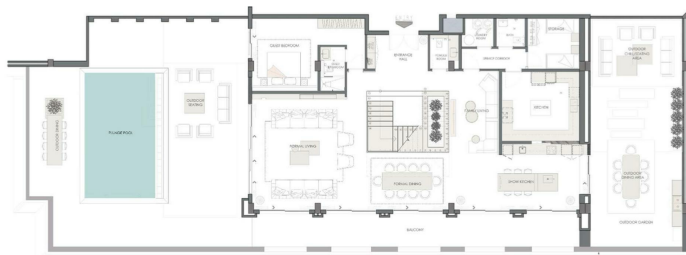


Unit Details

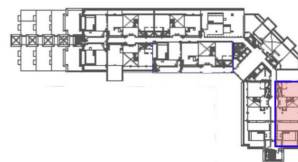


MEZZANINE FLOOR PLAN

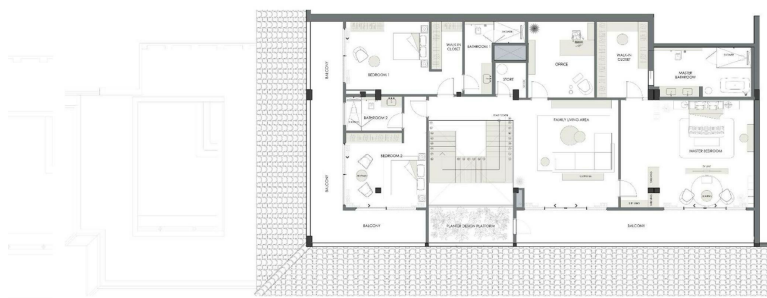


ANANTARA SOUTH RESIDENCE 802

Suite Area: 5181 Sq.Ft.
 Balcony Area: 3900 Sq.Ft.
 Total Area: 9081 Sq.Ft.



MEZZANINE FLOOR PLAN



ANANTARA SOUTH RESIDENCE 802

Suite Area: 5181 Sq.Ft.
 Balcony Area: 3900 Sq.Ft.
 Total Area: 9081 Sq.Ft.



A Seven Tides project. Anantara The Palm Dubai Resort are not owned, developed or sold by Minor International (Thailand) PCL., Minor Hotel Group, Anantara Hotels, Resorts & Spas or their affiliates. Seven Tides uses the Anantara trademark and trade name under license from Anantara Hotels, Resorts & Spas.

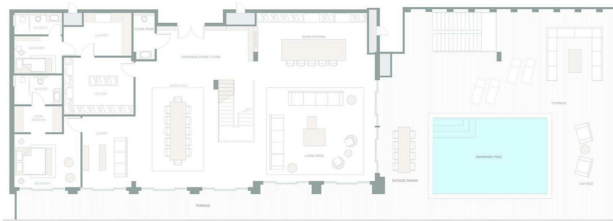
Renders, illustrations, unit plans and examples of materials are for illustrative purposes only and Seven Tides reserves the right to change the designs and materials without notice. Seven Tides reserves the right to make revisions and alterations at its sole discretion.



Unit Details

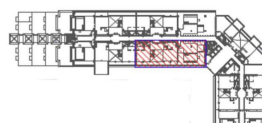


LOWER FLOOR PLAN



ANANTARA SOUTH RESIDENCE 805

Suite Area: 6900 Sq.Ft.
 Balcony Area: 3710 Sq.Ft.
 Total Area: 10611 Sq.Ft.



UPPER FLOOR PLAN



ANANTARA SOUTH RESIDENCE 805

Suite Area: 6900 Sq.Ft.
 Balcony Area: 3710 Sq.Ft.
 Total Area: 10611 Sq.Ft.



A Seven Tides project. Anantara The Palm Dubai Resort are not owned, developed or sold by Minor International (Thailand) PCL, Minor Hotel Group, Anantara Hotels, Resorts & Spas, or their affiliates. Seven Tides uses the Anantara trademark and trade name under license from Anantara Hotels, Resorts & Spas.

Renders, illustrations, unit plans and examples of materials are for illustrative purposes only and Seven Tides reserves the right to change the designs and materials without notice. Seven Tides reserves the right to make revisions and alterations at its sole discretion.

